

# S 52 SX

Truck-mounted concrete pump



Vertical reach		52.00 m
Concrete output	max.	162 m <sup>3</sup> /h
Pressure on concrete	max.	85 bar

**MADE IN GERMANY**  
by SCHWING-Stetter 



RECORD BREAKING ENGINEERING

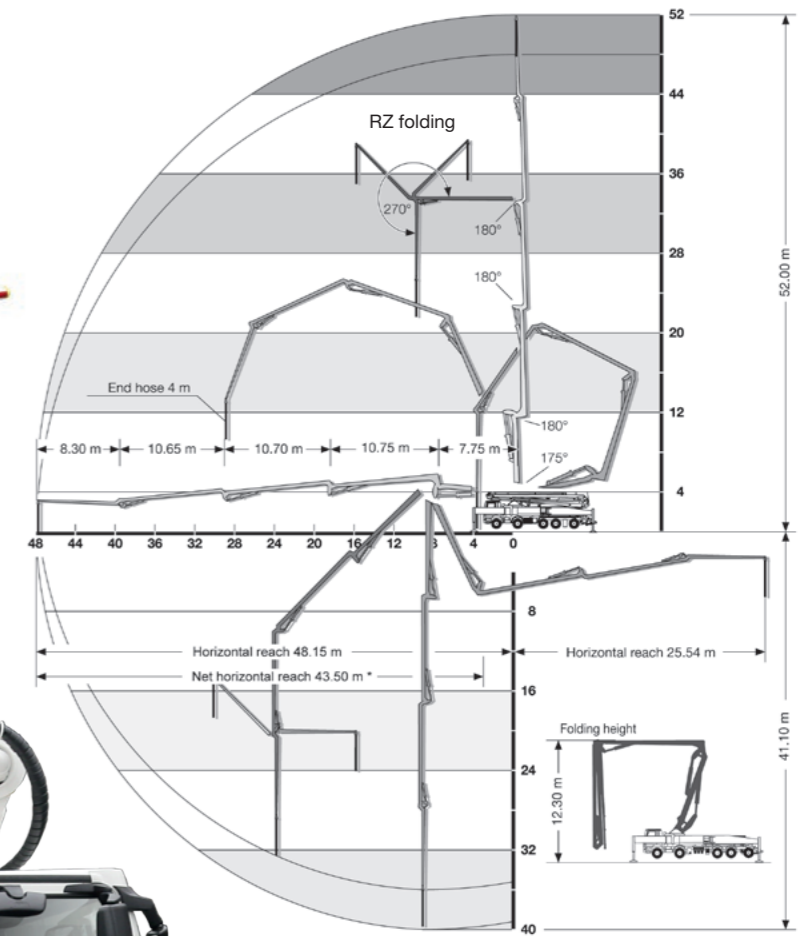
SCHWING GmbH  
Heerstrasse 9-27  
44653 Herne, Germany  
Phone +98 021 - 224 286 75-8  
Fax +98 021 - 224 286 78  
@mr.pump\_iran  
www.saghargostar-co.ir

# The S 52 SX from SCHWING

## Far-reaching performance

S 52 SX Truck-mounted concrete pump

Reliable, powerful, efficient. And made in Germany like all other SCHWING truck-mounted concrete pumps. This is the S 52 SX. High pump power at low engine speed and the legendary robustness of the ROCK valve provide unmatched low operating and maintenance costs. The lowest support space requirement in this class and an unrivalled short set up time means all pumping jobs performed properly and on time. And as the development, testing and manufacture of all main components is by SCHWING, reliability, performance and a long lifetime are ensured.



\*from front of outriggers

**Boom**  
The overhead roll and fold boom enables an unrivalled speed of erection of the boom since it can be moved directly into the working position without having to slew it. And the 270° rotating of the tip section gives maximum flexibility for every placing situation.



**Pump kit**  
Only the SX outriggers by SCHWING allows the longstroke pump kit P2525 with 2.50 m long pumping cylinders to be used in this class of machine. Advantages: even smoother operation and 15% less strokes than with pump kits otherwise available in this class.



**Open hydraulic system**  
The open hydraulic system of the S 52 SX converts the engine power efficiently into pump power with little loss. Thus, the usual practice output rates can be realized with a fuel-saving engine speed of just over 1000 rpm.



**SX outriggers**  
The SX outriggers developed by SCHWING combine high torsional rigidity and excellent stability with the lowest space requirement in this class. The protected piston rod and internally laid hydraulic lines prevent damage and reduce service costs.



**Concrete valve**  
The legendary low wear ROCK valve with its optimal geometry for low-friction concrete flow ensures low service and operating costs. Being fast and easy to clean, the S 52 SX is quickly ready for the next job.



**Supply control**  
The water box can be filled and emptied, and the water pump, agitator, spray hose, high pressure cleaner and compressor, all controlled via the standardised supply control. This is the standard for all SCHWING truck-mounted concrete pumps for greater clarity and ease of operation.



**Remote control SC 30**  
The light weight, easy to use and comfortable SC 30 helps minimise fatigue, allowing the operator to focus on the job for extended periods. The powerful batteries guarantee an operating time of at least 8 hours.



**VECTOR control**  
The machine operator can inspect machine data, operating conditions and settings on S 52 SX, changing various parameters, all through the intuitive VECTOR control. The integrated diagnostic system ensures safe operation and also reminds the operator when maintenance is necessary.



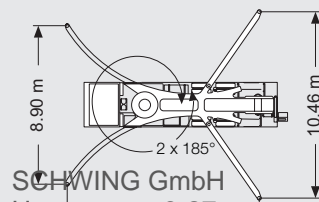
SCHWING GmbH  
Heerstrasse 9-27  
44653 Herne, Germany  
Phone +98 021 - 224 286 75-8  
Fax +98 021 - 224 286 78  
@mr.pump\_iran  
www.saghargostar-co.ir

# S 52 SX Truck-mounted concrete pump



## Technical data

Performance		
Pump kit		P 2525-120/85
Drive	l/min	636
Delivery cylinders	mm	250 x 2,500
Concrete output max.	m <sup>3</sup> /h	162
Pressure on concrete max.	bar	85
Stroke rate max.	1/min.	22
Concrete valve		B-ROCK
Hydraulic system		
Design		open system
Hydraulic tank	l	825
Boom 52 RZ		
Delivery line		DN 125
Length of end hose	m	4.00 (Option: 1.00 + 3.00)
Vertical reach	m	52.00
Reach depth	m	41.10
Horizontal reach	m	48.15
Net horizontal reach	m	43.50 (from front of outriggers)
Number of boom sections		5
Height of joints (supported)	m	3.80 / 11.6 / 22.30 / 33.00 / 43.70
Slewing range		2 x 185°
Folding height	m	12.30
Support		
Outrigger width, front	m	8.90
Outrigger width, rear	m	10.46
Outrigger load, front	kN	340
Outrigger load, rear	kN	300



SCHWING GmbH  
Heerstrasse 9-27  
44653 Herne, Germany  
Phone +98 021 - 224 286 75-8  
Fax +98 021 - 224 286 78  
@mr.pump\_iran  
www.saghargostar-co.ir

SCHWING concrete pumps. Efficiency as standard.



SCHWING GmbH  
Heerstrasse 9-27 · 44653 Herne, Germany  
Fon +49 23 25 - 987-0 · Fax +49 23 25 - 72922  
www.schwing-stetter.com · info@schwing.de

Stetter GmbH  
Dr.-Karl-Lenz-Strasse 70 · 87700 Memmingen, Germany  
Fon +49 83 31 - 78-0 · Fax +49 83 31 - 78 275  
www.schwing-stetter.com · info@stetter.de